

Skyview

MRD2076-307-CRD-1 (S60-009-287)



SQ.FT.
1,520



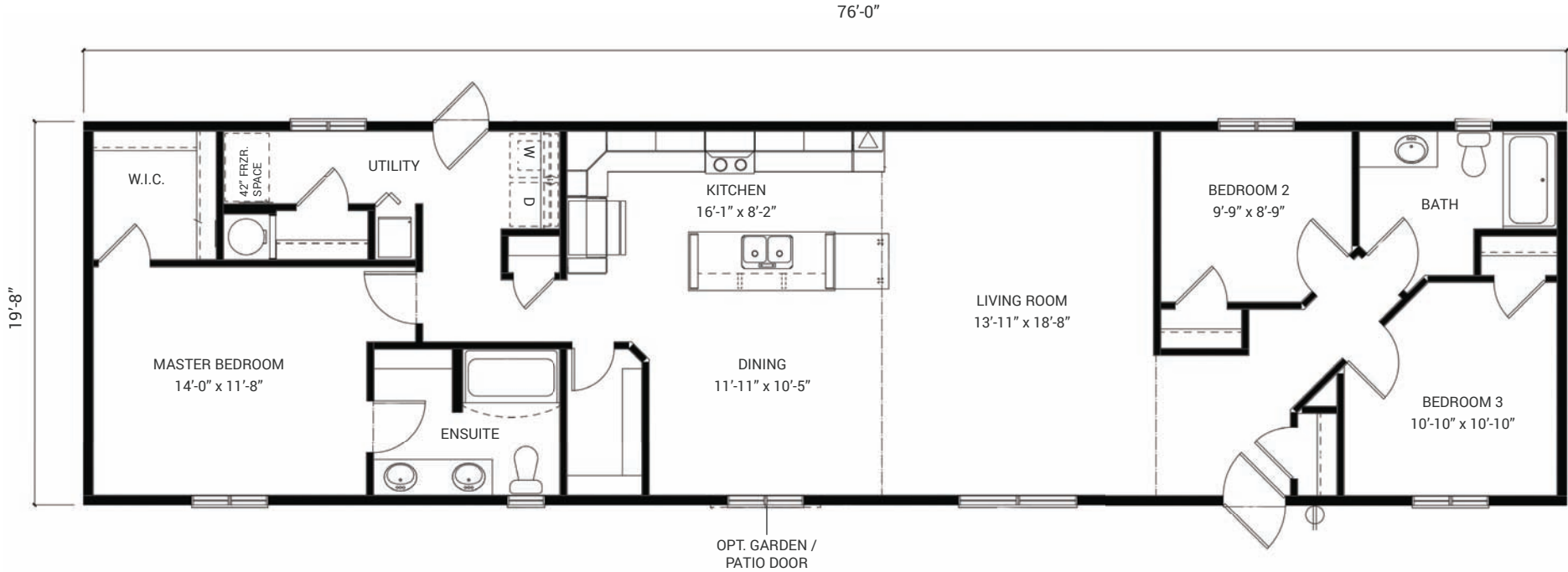
DIMENSIONS
20 X 76



BEDROOM
3



BATHROOM
2



- 30 Year Shingles
- 20 Year Triple M Warranty
- Vaulted Cathedral Ceilings
- White Silk Glass door on Pantry
- Classique W/Barn Door Hardware on Ensuite entrance
- 30" Entrance Bench
- Gas Fireplace W/Media Cabinet L/Rm
- Stainless Steel Appliance Pkg
- Soft Close Door Hardware
- Antique White Wash Cabinets
- Crown Moulding on Kitchen Cabinets
- Full Tile Backsplash
- Pot & Pan Drawers
- Wine Rack
- 60" Shower Stall in Ensuite
- Banjo Top over Toilet in Ensuite

Phone: 403.912.2450
Toll Free: 1.800.461.7632

In the interest of maintaining the standard of this project, United Homes Canada reserves the right to make modifications and changes without notice. Sizes and/or dimensions may vary from the actual survey. Measurements are approximate and should be verified. This plan is property of United Homes Canada. All rights are reserved, including the right or reproductions in whole or in part.

148 East Lake Blvd. NE., Airdrie, Alberta

UNITEDHOMESCANADA.COM