

# Silverberry

MW2076-257-C-1 (S60-009-286)



SQ.FT.  
1,520



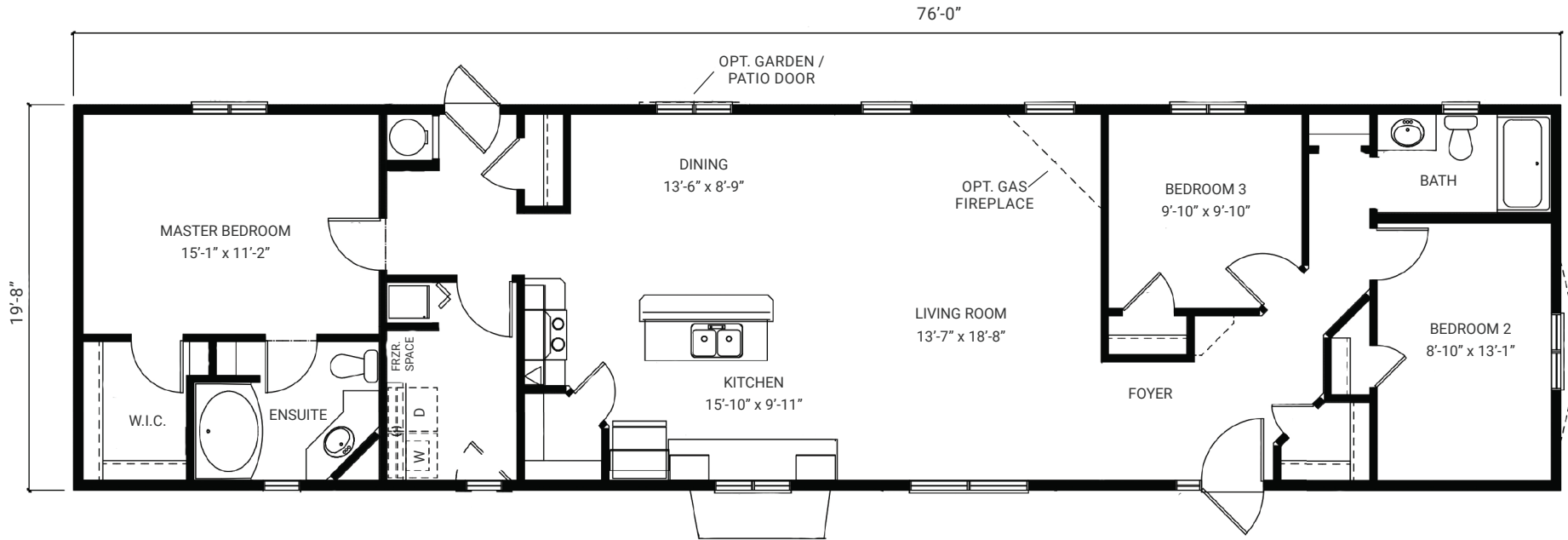
DIMENSIONS  
20 X 76



BEDROOM  
3



BATHROOM  
2



- 30 Year Shingles
- Cathedral Ceiling
- Full Tile Backplash with Glass Tile Insert
- Pot and Pans Drawer

- Slate Appliance Package
- Ensuite Bathroom
- 60" Shower Stall
- Pendant Lights Over Island

**Phone:** 403.912.2450  
**Toll Free:** 1.800.461.7632

148 East Lake Blvd. NE., Airdrie, Alberta

**UNITEDHOMESCANADA.COM**

In the interest of maintaining the standard of this project, United Homes Canada reserves the right to make modifications and changes without notice. Sizes and/or dimensions may vary from the actual survey. Measurements are approximate and should be verified. This plan is property of United Homes Canada. All rights are reserved, including the right or reproductions in whole or in part.

09/07/2018