

Silverberry III



SQ.FT.
1,520



DIMENSIONS
20 X 76



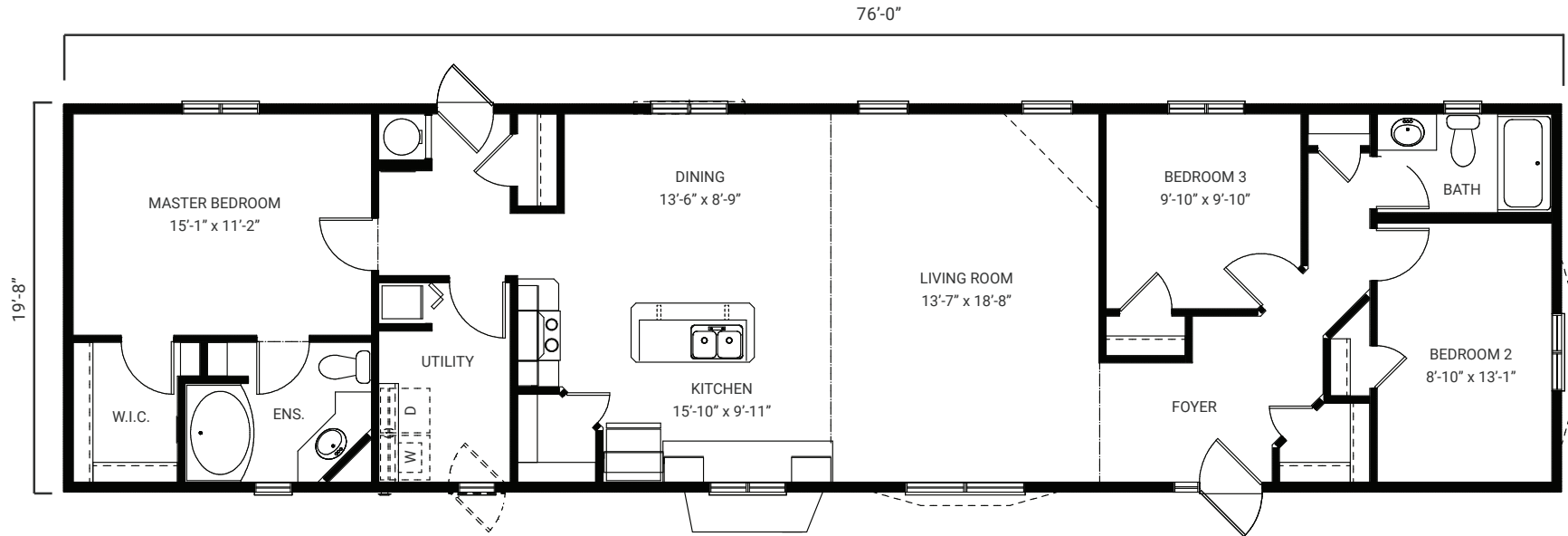
BEDROOM
3



BATHROOM
2



Actual exterior colour of home is gray.



- Garden Doors w/ Built-in Blinds
- Tiled Gas Fireplace w/ Mantle
- Walk-A-Bay Living Room Window
- Cordless Cellular Blinds
- Com Box
- Kitchen Crown Moldings
- Built-in Corner Bench w/ Upper Shelving in Foyer
- Raised Kitchen Island/Breakfast Bar
- Full Tile Backplash
- Pot and Pans Drawer
- Slate Appliance Package
- Pendant Lights Over Island

Phone: 403.912.2450
Toll Free: 1.800.461.7632

In the interest of maintaining the standard of this project, United Homes Canada reserves the right to make modifications and changes without notice. Sizes and/or dimensions may vary from the actual survey. Measurements are approximate and should be verified. This plan is property of United Homes Canada. All rights are reserved, including the right or reproductions in whole or in part.

2021/01/07

148 East Lake Blvd. NE., Airdrie, Alberta

UNITEDHOMESCANADA.COM